

# CG/FILTER-UVc



**Air purifying units for circular ducts, with 25 mm acoustic surround for noise reduction, without fan**



#### Characteristics:

- 40 mm aluminium profile structure.
- Covers with a high quality, 25 mm thick acoustic casing made of prefinished sheet.
- Standardised inlet and outlet flanges allowing for easy installation in ducts.
- Filtration stages, depending on model:
  - F7 + F9.
  - F7 + HEPA H14.
- Active carbon filter for odour removal.
- Germicidal chamber with UVc ultraviolet lamps (256 nm), depending on model.
- Inspection cover for filter maintenance and replacement.

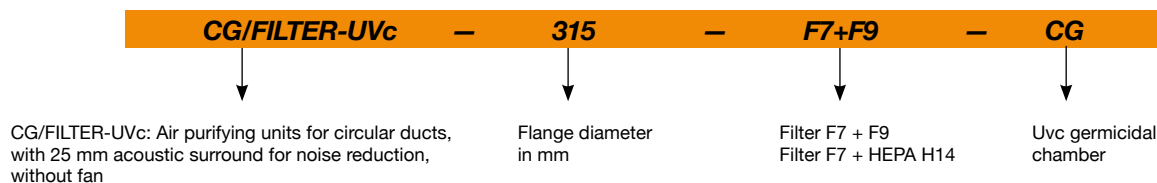
#### Finish:

- Aluminium profile and prefinished sheet steel structure with 25 mm thick thermal and acoustic insulation panels.

#### On request:

- Dirty filter monitoring and alarm.

## Order code



## Technical characteristics

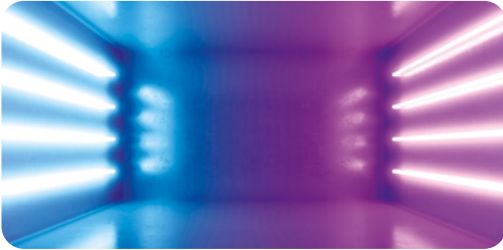
Model	Maximum flow rate (m <sup>3</sup> /h)		Approx. weight (Kg)
	Filters (F7+F9)	Filters (F7+H14)	
CG/FILTER/UVc-315	470	415	30
CG/FILTER/UVc-355	700	550	30
CG/FILTER/UVc-450	1800	1400	62
CG/FILTER/UVc-500	2350	2050	105

## Filter characteristics

Filters	EN 779 <i>Em</i>	EN 1822	ISO 16890			
			ISO ePM <sub>1</sub>	ISO ePM <sub>2,5</sub>	ISO ePM <sub>10</sub>	ISO COARSE
F7	90%	-	>50%	>65-95%	>85%	-
F9	95%	-	>80%	>95%	>95%	-
HEPA H14	-	>99.995%	-	-	-	-

### Technical characteristics of the UVC germicidal chamber

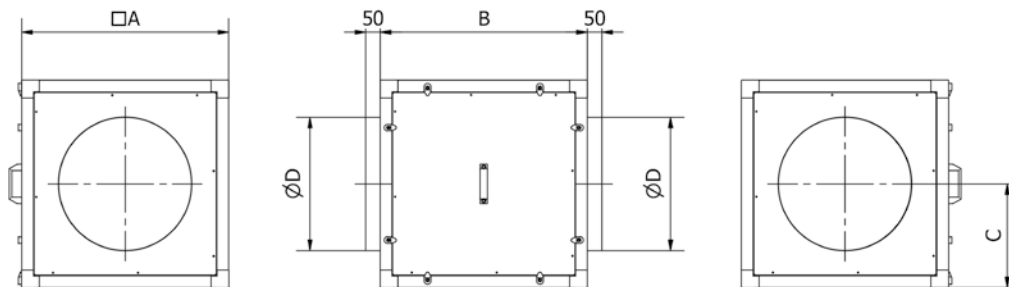
According to the model, these purification units can integrate a germicidal chamber, built with UVC ultraviolet lamps in a 256 nm spectrum, a wave width indicated to inactivate a wide variety of microorganisms by absorbing short wavelength energy through DNA and RNA.



Model	Number of lamps	Total electrical power(W)	Total Uvc radiation power (W)	Radiation dose (mJ/cm <sup>2</sup> ) *
CG/FILTER/UVc-315	6	54	16.8	7.3
CG/FILTER/UVc-355	6	54	16.8	5.5
CG/FILTER/UVc-450	4	102	28	5.0
CG/FILTER/UVc-500	6	153	42	6.6

\*Minimum dose calculated based on flow with filters: F7+HEPA H14

### Dimensions mm



	A	B	C	ØD
CG/FILTER/UVc-315	500	500	250	315
CG/FILTER/UVc-355	500	500	250	355
CG/FILTER/UVc-450	700	700	350	450
CG/FILTER/UVc-500	900	900	450	500

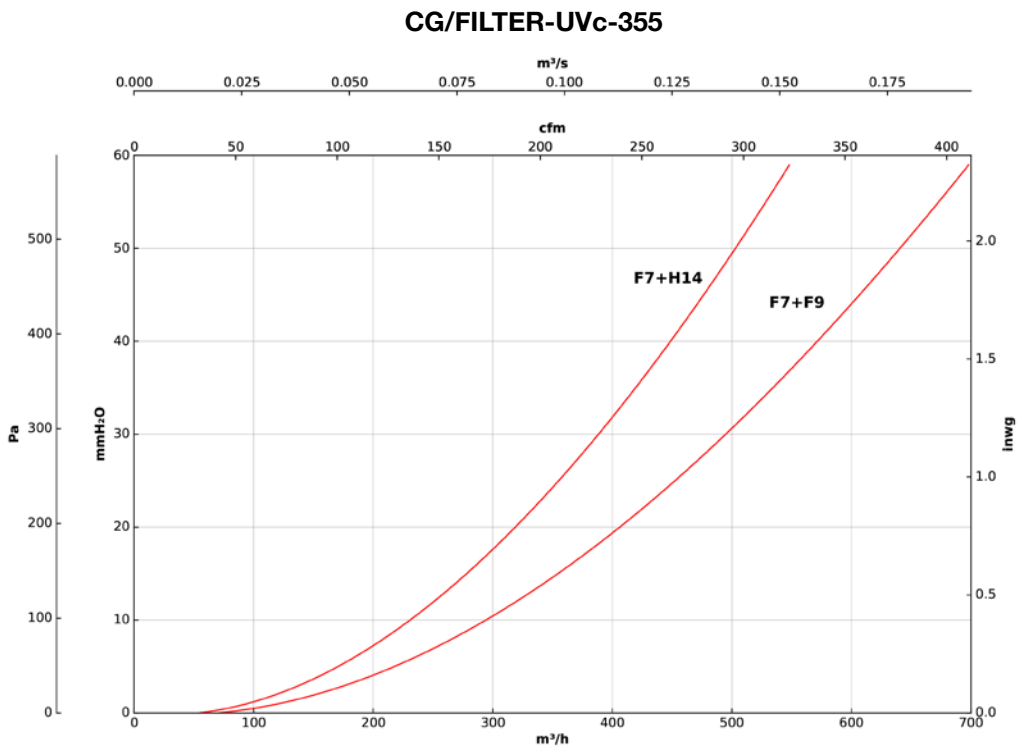
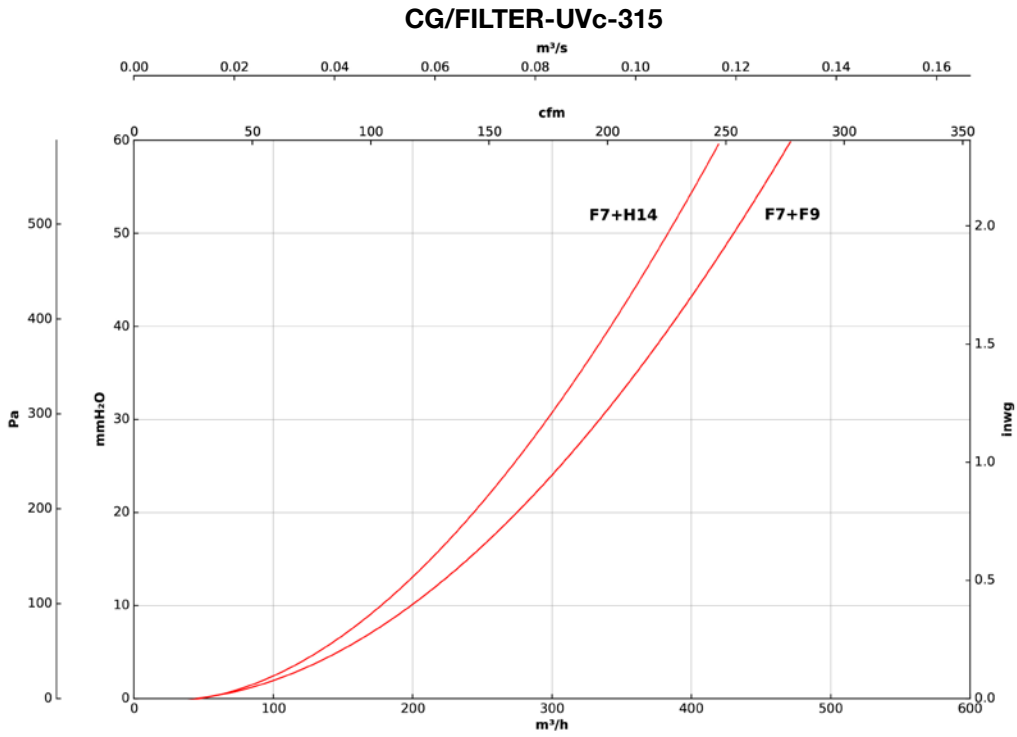
### Accessories



### Characteristic curves

Q= Flow rate in m<sup>3</sup>/h, m<sup>3</sup>/s and cfm

Pe= Static pressure in mm H<sub>2</sub>O, Pa and inwg



### Characteristic curves

Q= Flow rate in m<sup>3</sup>/h, m<sup>3</sup>/s and cfm

Pe= Static pressure in mm H<sub>2</sub>O, Pa and inwg

